

THE BEAD HOLD

161 Point Chevalier Road, Point Chevalier, Auckland
www.thebeadhold.co.nz 09 845 1345

FREE PROJECT - SPRING EARRINGS



INGREDIENTS

- 2 x metal open flowers
- 2 x 4mm beads/crystals
- 2 x small tin leaves
- 2 x headpins
- earring hooks/studs
- 6 x 3mm jumprings
- 4cm fine chain - optional

EQUIPMENT

- Round Nose Pliers
- Chain Nose Pliers
- Wire Cutters
- A bead mat to work on

1. Take 1 x 4mm bead and slide it down a headpin. Cut 1cm above the bead and make a lollipop loop with your pliers.

2. Open a jumpring and attach the leaf to one of the flower petals.

3. Open another jumpring and attach the bead set to the same petal as the leaf.

4. Open a third jumpring to attach a stud fitting to the top petal of the flower, making sure the bead and leaf are hanging down OR if using a hook, open the loop on the earring fitting to connect so everything hangs straight.
REPEAT 1 - 4 for the second side.



CHAIN VERSION

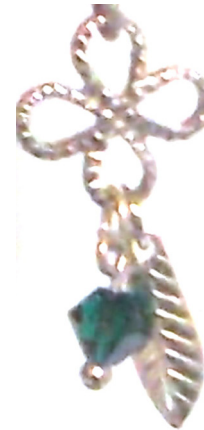
- at step 2 above, open the jumpring and attach the flower, half the chain, and the leaf. Close the jumpring.
- open another jumpring and connect the bead set to the bottom of the chain
- attach the earring hook/stud as above in step 4



THE BEAD HOLD

161 Point Chevalier Road, Point Chevalier, Auckland
www.thebeadhold.co.nz 09 845 1345

FREE PROJECT - SPRING EARRINGS



INGREDIENTS

- 2 x metal open flowers
- 2 x 4mm beads/crystals
- 2 x small tin leaves
- 2 x headpins
- earring hooks/studs
- 6 x 3mm jumprings
- 4cm fine chain - optional

EQUIPMENT

- Round Nose Pliers
- Chain Nose Pliers
- Wire Cutters
- A bead mat to work on

1. Take 1 x 4mm bead and slide it down a headpin. Cut 1cm above the bead and make a lollipop loop with your pliers.

2. Open a jumpring and attach the leaf to one of the flower petals.

3. Open another jumpring and attach the bead set to the same petal as the leaf.

4. Open a third jumpring to attach a stud fitting to the top petal of the flower, making sure the bead and leaf are hanging down OR if using a hook, open the loop on the earring fitting to connect so everything hangs straight.
REPEAT 1 - 4 for the second side.



CHAIN VERSION

- at step 2 above, open the jumpring and attach the flower, half the chain, and the leaf. Close the jumpring.
- open another jumpring and connect the bead set to the bottom of the chain
- attach the earring hook/stud as above in step 4

